



A-Series with Display combines a ground-breaking 30-character display screen with the efficiency and accuracy of a USB audit download and optional OTC app.

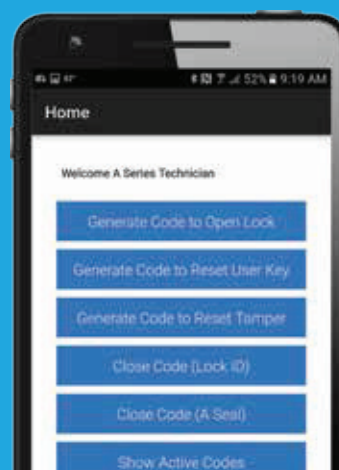
## A-Series One-Time Code App

**GREATER CONVENIENCE.** Much faster than a dispatch call, technicians get a one-time code immediately from a mobile device.

**MORE MANAGEMENT CONTROL.** Supervisors assign time windows for network access and codes are only live during that time block. PIN, key, and code combinations are time-stamped for easy oversight.

**IMPROVED SECURITY.** Quicker code generation reduces premise time, while ongoing call center support ensures a quick response if help is required. No close seal codes are required\*—eliminating the risk of out-of-sync codes.

\*Although A-Series Locks do not require a close seal, for user processes that do require that step, the A-Series with Display offers an A-Seal value shown automatically on the screen.



## Multiple Modes of Operation

### BANK MODE

- No key required to access the lock.
- With A-Series with Display, easily track and delegate code access for up to 29 user PIN positions.

### SERVICE MODE

- Operation codes are generated for a specific time window and are only live during that window.
- Instant power via two long-lasting 9V batteries.
- For added security, users must have a formatted touch key, four-digit PIN, and an eight-digit one-time code to access the lock.
- One-time codes available immediately via mobile app or over the phone through mobile dispatch.
- Future-dated code windows with expiration times and no required close seals eliminate out-of-sync code risk.

### BANK + SERVICE MODE

- Lock can be placed in both bank and service modes, allowing personnel from either category to access the ATM without changing the lock programming.

## PRODUCT SPECIFICATIONS

### User Authentication

- Service Mode: eight-digit operation code, four-digit user-defined PIN, touch key
- Bank Mode:
  - Existing A-Series locks: combinations require two-digit PIN position and six-digit combination; 20 total codes
  - A-Series with Display: combinations can be set up as eight digits (no PIN position required for entry); 30 total codes

### Shared Access

- Yes—no vendor meets

### One-time Combination

- Yes—Service Mode

### User-defined Combinations

- Yes—Bank Mode

### Wrong Combo Penalty

- Yes

### Central Control

- Yes—with LMS software

### Audit Trail

- A-Series—400 events
- A-Series with Display—1,000 events
- User touch key—100 events
- Manager touch key—38 events

### Audit Reports

- Via LMS software

### Operating Modes

- Bank Mode
- Service Mode—dual control available in A-Series with Display
- Bank and Service Mode

### Duress Combination

- Yes—Bank Mode and Service Mode

### Bolt Status

- Yes

### Installation

- Estimated installation time—10 minutes

### Dimensions

- Keypad: 1.44"H x 4"D
- A-Series With Display: 1.18"H x 4.1"D
- Pivot Bolt: 3.31"L x 2.4"W x .990"H
- Direct Drive: 3.31"L x 2.4"W x .990"H
- Dead Latching: 3.32"L x 2.4"W x 1.1"H
- Push/Pull: 3.32"L x 2.4"W x 1.1"H

### Worldwide Security Listed

#### A-Series Certifications

- UL Type 1 (US)
- VdS Class 2 (Germany)
- CEN-EN 1300 (Europe)
- A2P/CNPP Class B/E (France)

#### A-Series with Display

- UL Type 1 (US)
- Other Certifications Pending

## MECHANICAL AND ELECTRICAL SPECIFICATIONS

### Keypad

- 12-button sealed with tactile feedback

### Visual Indicators

- LED response light for keypad input
- Three color-coded status indicators for lock function

### Display

- E-ink, no power display
- Up to 30 characters

### Power

- A-Series with Display requires two 9V batteries
- AC hardwire adapter (optional)
- Battery life under normal operation—two years

### Touch Key

- 8K-bit and 64K-bit (DS 1995 and DS 1996) read-write memory
- Multi-stage encrypted

## SOFTWARE SPECIFICATIONS

### Lock Management System Software

#### Operating System

- Server or stand-alone application—Windows® 7, 8, 10 (32/34 bit Ultimate and Professional)
- Windows Server 2008, 2012

#### Language Support

- Standard: English, Spanish, French, German, Polish, Portuguese, Chinese simplified
- LMS Custom Translator: Translate LMS screens into other languages

#### Quantity of Locks Controlled

- Limited only by available hard disk space

#### Quantity of Users Managed

- Limited only by available hard disk space

#### Quantity of Audit Events

- Unlimited when properly archived

### Minimum PC Requirements

- Server or stand-alone application
  - 2GB of RAM
  - Up to 500 MB of free disk space
  - Available USB or serial port for touch key adapter
- Client Application
  - 1GB of RAM
  - Up to 250 MB of free disk space
  - Available USB or serial port for touch key adapter

### Database Platform

#### Database Platforms Supported by LMS Software

- Microsoft SQL 2012, Standard or Enterprise editions
- Express version provided with LMS
- Standard or Enterprise editions obtained by customer

### Bridge Software

#### Operating System

- Windows® 7, 8, 10 (32/34 bit Ultimate and Professional)
- Windows Server 2008, 2012

#### Minimum PC Requirements

- 1GB of RAM
- Up to 250 MB of free disk space

### Bolt Configuration Options

- Dead latching
- Push/pull
- Pivot Bolt (A-Series with Display only)
- Direct Drive (A-Series with Display only)

For a complete list of specifications and optional modules, please visit [www.sargentandgreenleaf.com](http://www.sargentandgreenleaf.com).

Protecting assets from high-security government sites to banks to businesses for more than 150 years, Sargent and Greenleaf continues to set the standard for innovation, security, quality, and trust.

Corporate Headquarters  
One Security Drive  
Nicholasville, Kentucky 40356  
Telephone: 859-885-9411  
Fax: 859-887-2057

European Headquarters  
9, chemin du Croiset  
1024 Ecublens  
Switzerland  
Telephone: 41-21-694-3400



Except as otherwise noted, all trademarks in this data sheet are trademarks of Sargent and Greenleaf in the U.S. and elsewhere. ® denotes a trademark registered with the U.S. Patent and Trademark Office and/or other Trademark offices around the world.

630-912  
© 2020 Sargent and Greenleaf

## SARGENT AND GREENLEAF A-SERIES™ PRODUCTS



# A-Series and A-Series with Display

Trusted Worldwide for ATM Security and Access Control





# A-Series Product Family

(Models 6128, 6129, 3006, 3007, 3028, 3029)

## GREATER ACCESS CONTROL

A-Series Locks require multiple points of authentication for access, allowing for pinpointed access control.

## GREATER CODE CONTROL

Compared to other one-time use code protocols, A-Series codes offer greater security and oversight. Managers specify a 4-, 8-, 12-, or 24-hour window during which a code is live, and all code use is time-stamped for easy tracking.

## MULTI-LINGUAL SOFTWARE

A-Series Lock Management Software (LMS) meets requirements for global placement with an intuitive interface available in multiple languages including English, Spanish, French, German, Polish, Portuguese, and Chinese. A Custom Translator feature allows translations into any other language you require.

## QUICK, EASY LOCK INSTALLATION

A-Series Locks have fewer parts and the lock cover can remain in place during installation—which only takes 10 minutes from start to finish. Similar footprints and consistent functions simplify replacements and upgrades.

## SECURE SHARED ACCESS

A-Series Locks authorize shared access through secure file transfers rather than requiring costly and time-consuming in-person vendor meets. This unique technology allows for more efficient and secure subcontractor access control.

## HIGHLY ACCURATE AUDITING

A-Series Locks store time in the lock, not on the key. This ensures that A-Series Locks are not susceptible to time drift, a critical feature that keeps A-Series audit trails highly accurate and reliable.



A-Series with Display



A-Series

# A-Series with Display

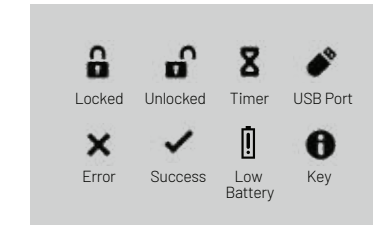
(Models 3006, 3007, 3028, 3029)

A 30-character, multi-featured display. Enhanced functionality. Revolutionized ATM security.

## EXTRA-LARGE SCREEN DISPLAY

A ground-breaking, 30-character display screen makes servicing A-Series with Display a simpler, more intuitive, and more secure option than ever before.

Larger screen size with combinations of text, icons, images, and codes allows greater detail and enhanced user experience regardless of the user's native language, technical background, or the traffic and noise volume around the lock.



## FASTER, MORE POWERFUL AUDITING

A-Series with Display allows audit trail downloads via iButton or incorporated USB drive. USB audit downloads feature:

- Faster download speed.
- Greater storage capacity—up to 1,000 events from multiple locks versus 400 events via iButton.
- Ability to store audit trails from multiple locks onto one flash drive.
- Audit trail email capability (without additional software).

## AUDIO AND VISUAL INTEGRATION

Multiple visual elements including extra-large display screen and keypad indicator lights, combined with the beeps and braps used by all A-Series Locks, enhance the user's ability to understand, process, and act on information quickly and accurately.



A quicker, easier, more intuitive solution for ATM security.

# Digital Platform

Sargent and Greenleaf's digital solutions—including ground-breaking A-Series with Display—offer flexible, modular designs and advanced features that make it easier to integrate security into today's modern, global business. Our distinctive digital platform includes:

- Consistent programming and user experience across the A-Series platform: 3006, 3007, 3028, 3029.
- Easier installation and retrofit.
- Simpler, smarter, faster operation of all hardware.
- Intuitive software.
- Greater customization and future-proof design.
- Advanced data management for robust, secure oversight.
- Sophisticated security incorporating leading-edge technology, encryption, and multiple levels of authentication.

## TECHNICAL SUPPORT AND WARRANTY

Sargent and Greenleaf backs all A-Series Locks with an industry-leading, two-year limited warranty and around-the-clock technical support. Warranty coverage and tech support is:

- Global
- Multi-lingual
- Staffed by highly-trained A-Series specialists

Extra-large 30-character display screens increase speed and accuracy.

